

Group 4

Computer cabinets and Quality stations







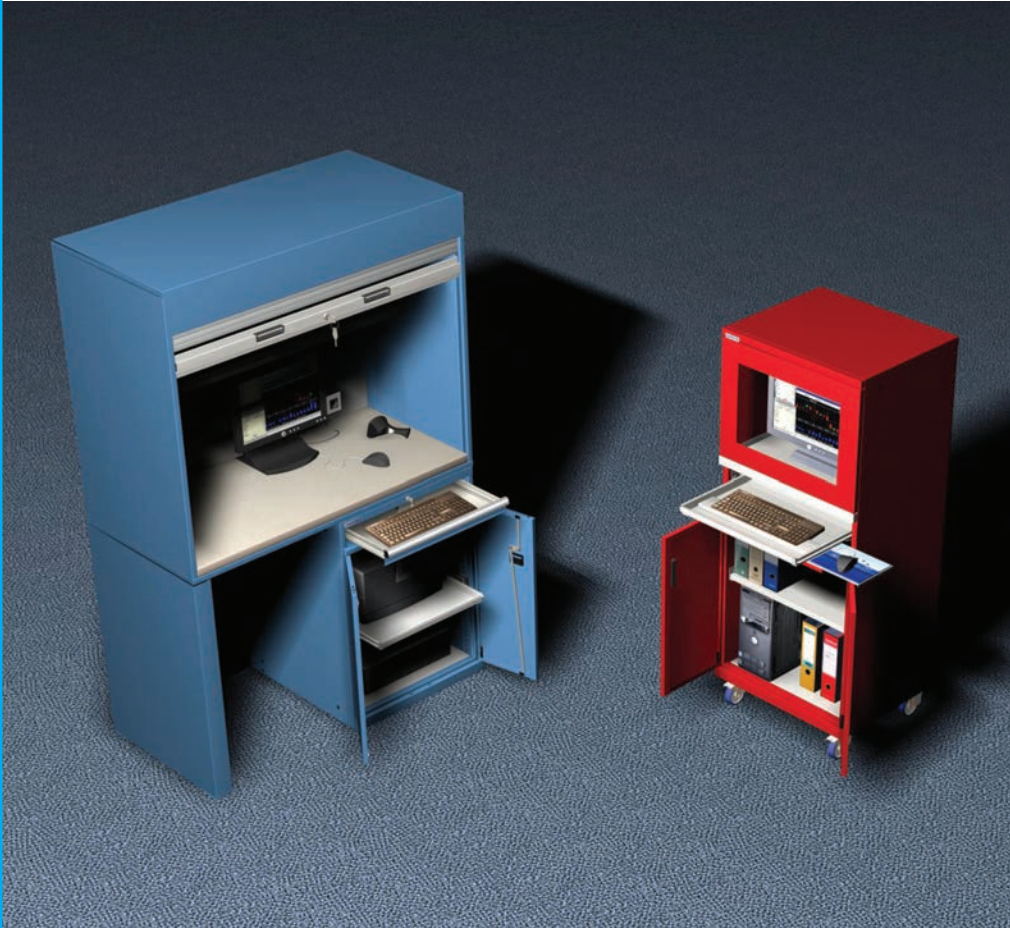
Series 13-17

Computer cabinets
see page 129







4 Computer cabinets and Quality stations

Quality stations
see page 132



Standard colours:

RAL 5012	RAL 6011	RAL 7035	RAL 9010
			





Computer cabinets



Cabinet housings

Made of high-quality sheet steel. Housing sides and bases are welded and painted with high resistance products, environmentally friendly. With slotted sides in increments of 25 mm to allow shelves to be adjusted accordingly.

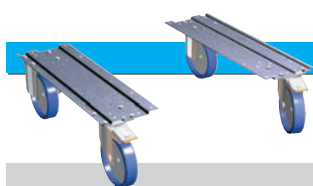
Cabinet features:

- Central locking system to close upper and lower compartment - keyed alike
- Monitor leaf door with Plexiglas® window for visibility
- Monitor compartment usable dims: 600x500x520mm (WxDxH)
- Retractable keyboard drawer with mouse holder
- Built-in ventilator and dust filter to protect equipment from overheating
- 4 standard European sockets with 1 mtr. connecting cable
- Lower compartment closed with leaf doors

Width mm	Depth mm	Height mm	Socket type	Socket type
			Schuko Part. No.	UK Part. No.
717	595	1625	17-61620	17-61626

Different types of sockets are available on request

Colours: see colour chart at the bottom of the page



Castor sets, pairs

	Height mm	Pair Part. No.
with nylon castors Ø 100 mm	137	06-28102
with polyurethane castors Ø 100 mm	137	06-28101
with polyurethane castors Ø 150 mm	194	06-28151

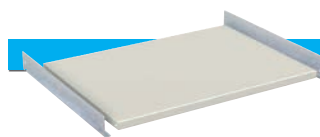
Load capacity: 400kg with load evenly distributed
Supports made of steel



nylon castors
(2 fixed and
2 swivel braked)



polyurethane castors
(2 fixed and
2 swivel braked)



Adjustable shelf

Made of steel. Lateral supports included

Usable width mm	Usable depth mm	Height mm	Load capacity kg	Part. No.
658	467	35	70	17-60028

Colour: Light grey RAL 7035



Retractable shelf

Made of high-quality steel

Usable width mm	Usable depth mm	Height mm	Extension %	Load capacity kg	Part. No.
612	459	35	85	50	17-63900

Colour: Light grey RAL 7035



Lower shelf

Made of high-quality steel

Usable width mm	Usable depth mm	Height mm	Load capacity kg	Part. No.
660	467	55	50	17-60034

Colour: Light grey RAL 7035



Cabinet bases

Made of high-quality steel

	Width mm	Depth mm	Height mm	Part. No.
1 Base plinth	717	540	50	05-43505
1 Base plinth	717	540	130	05-43513
2 Pallet base	717	506	100	05-13510
3 Cover plate	717	-	100	05-33610

Colour: Black



Load capacity is intended for evenly distributed loads

Standard colours:

RAL 5012	RAL 6011	RAL 7035	RAL 9010

Series 17



Standard examples:

Static computer cabinets:



AS

Size: 717x595x1625 mm

Socket type	Part. No.
Schuko	17-61620-01

Fittings:

- 1 Adjustable shelf
- 1 Lower shelf



AS

RS S

Size: 717x595x1625 mm

Socket type	Part. No.
Schuko	17-61620-02

Fittings:

- 1 Adjustable shelf
- 1 Retractable shelf

Mobile computer cabinets:



AS

Size: 717x595x1762 mm

Socket type	Part. No.
Schuko	17-61620-05

Fittings:

- 1 Adjustable shelf
- 1 Lower shelf
- 2 fixed and 2 swivel braked, polyurethane castors, Ø 100 mm



AS

RS S

Size: 717x595x1762 mm

Socket type	Part. No.
Schuko	17-61620-06

Fittings:

- 1 Adjustable shelf
- 1 Retractable shelf
- 2 fixed and 2 swivel braked, polyurethane castors, Ø 100 mm

Standard colours:

RAL 5012 RAL 6011 RAL 7035 RAL 9010



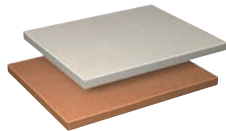


Series 13

Accessories for Quality Stations:

Quality Stations with roller shutter door

Worktops



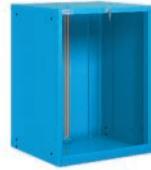
Basic Hardware Cabinet



Hardware Cabinet with Keyboard Drawer



Standard Drawer Cabinet



Closed leg



Retractable shelf



Adjustable shelf



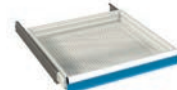
Lower shelf



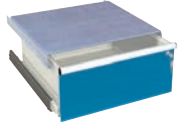
Drawer-S



Drawer-T



Drawer with single lock



Supports with Castors



Cabinet Bases





Series 13

4



Roller shutter cabinets for Quality Stations

Made of high-quality sheet steel, painted with high resistance products, environmentally friendly. To be fitted to the cabinets and/or closed legs, consisting of robust metal housing and plastic horizontal profiles with hand grip for easy operation. Sides are slotted to allow shelves to be adjusted accordingly. Equipped with safety cylinder lock with 2 keys.

Width mm	Depth mm	Height mm	Plastic laminated Part. No.	Multiplex Part. No.
1431	725	1200	13-50210	13-50220

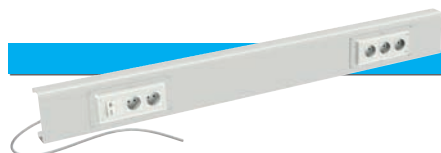
Colours: see colour chart at the bottom of the page



Adjustable shelf
Made of high-quality steel

Usable width mm	Usable depth mm	Height mm	Load capacity kg	Part. No.
1379	300	35	70	13-50232

Colour: Light grey RAL 7035



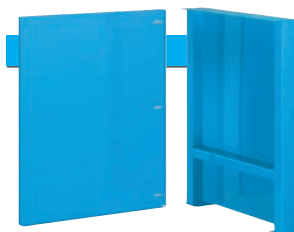
Power trunking
Made of high-quality steel

Width mm	Depth mm	Height mm	Socket type	Socket type
			Schuko Part. No.	UK Part. No.
1379	55	150	13-03130	13-03136

With 5 sockets and ON/OFF switch

Different types of sockets are available on request

Colour: Light grey RAL 7035



2

1

**Closed legs
Back panels**
Made of high-quality steel

1 Closed legs

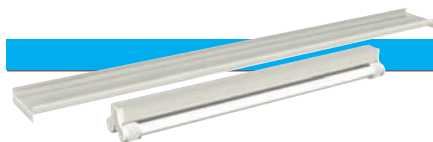
Height mm	Width mm	Depth mm	Part. No.
700	80	725	13-10700
800	80	725	13-10800
900	80	725	13-10900
1000	80	725	13-11000

Colours: see colour chart at the bottom of the page

2 Back panels

Height mm	Width mm	Depth mm	Part. No.
700	637	30	13-10710
800	637	30	13-10810
900	637	30	13-10910
1000	637	30	13-11010

Colours: see colour chart at the bottom of the page



Overhead light
Supports included

Width mm	Depth mm	Watt	Part. No.
1379	150	2x36 W	13-30012

Power cable not supplied

Colour: Light grey RAL 7035

Standard colours:

RAL 5012 RAL 6011 RAL 7035 RAL 9010

132



Load capacity is intended for evenly distributed loads

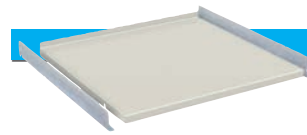


Hardware Cabinet housings with leaf doors

Made of high-quality sheet steel. Housing sides and bases are welded and painted with high resistance products, environmentally friendly. Available in different heights with sides slotted in increments of 25 mm to allow drawers to be adjusted accordingly. Doors fitted with safety cylinder lock and 2 keys. Electrical system and 1 mtr. connecting cable included.

Width mm	Depth mm	Height mm	Socket type	Socket type
			Schuko Part. No.	UK Part. No.
717	725	700	13-30710	13-30716
717	725	800	13-30810	13-30816
717	725	1000	13-31010	13-31016

Different types of sockets are available on request
Colours: see colour chart at the bottom of the page

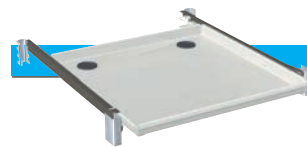


Adjustable shelf

Made of steel. Lateral supports included

Usable width mm	Usable depth mm	Height mm	Load capacity kg	Part. No.
658	620	35	70	33-72038

Colour: Light grey RAL 7035



Retractable shelf

Made of high-quality steel

Usable width mm	Usable depth mm	Height mm	Extension %	Load capacity kg	Part. No.
612	612	35	85	50	13-33900

Colour: Light grey RAL 7035



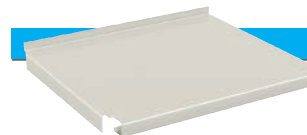
75 S

Hardware Cabinet housings with leaf doors and keyboard drawer

Made of high-quality sheet steel. Housing sides and bases are welded and painted with high resistance products, environmentally friendly. Available in one height only with sides slotted in increments of 25 mm to allow drawers and shelves to be adjusted accordingly. Fitted with central locking system, safety cylinder lock with 2 keys and single drawer opening system. Electrical system and 1 mtr. connecting cable included.

Width mm	Depth mm	Height mm	Socket type	Socket type
			Schuko Part. No.	UK Part. No.
717	748	1000	13-41010	13-41016

Different types of sockets are available on request
Colours: see colour chart at the bottom of the page

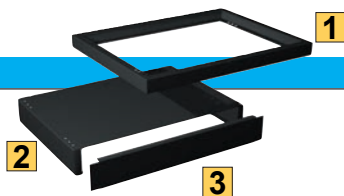


Lower shelf

Made of high-quality steel

Usable width mm	Usable depth mm	Height mm	Load capacity kg	Part. No.
660	618	55	50	10-30034

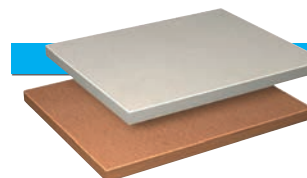
Colour: Light grey RAL 7035



Cabinet bases Made of high-quality steel

	Width mm	Depth mm	Height mm	Part. No.
1 Base plinth	717	693	50	05-43605
1 Base plinth	717	693	130	05-43613
2 Pallet base	717	659	100	05-13610
3 Cover plate	717	-	100	05-33610

Colour: Black



Work surfaces for cabinets

Width mm	Depth mm	Thickness mm	Multiplex Part. No.	Plastic laminated Part. No.
717	750	40	10-30012	-
717	750	30	-	10-30014

Colour: Plastic laminated Light grey



Electrical system is supplied with a fan and power trunking with 4 sockets and ON/OFF switch

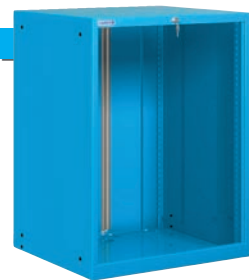
Standard colours:

RAL 5012	RAL 6011	RAL 7035	RAL 9010



Series 13

4



Cabinet housings 36x36 Eh

Made of high-quality sheet steel. Housing sides and bases are welded and painted with high resistance products, environmentally friendly. Available in different heights with sides slotted in increments of 25 mm to allow drawers to be adjusted accordingly. Fitted with central

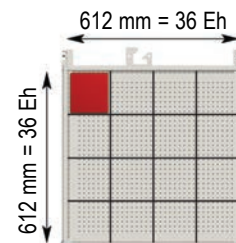
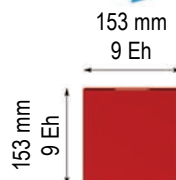
locking system, safety cylinder lock with 2 keys and single drawer opening system.

Width mm	Depth mm	Height mm	Usable height mm	Part. No.
717	725	700	600	10-30700
717	725	800	700	10-30800
717	725	1000	900	10-31020

Colours: see colour chart at the bottom of the page



Drawers 36x36 Eh



Made of high-quality sheet steel.

Available in two versions (simple or total extension) with steel roller bearings. All 4 drawer walls are slotted, for custom sub-division using partitioning material. All drawer handles are equipped with aluminium profiles, end caps and labelling strips.

Front height mm	Usable height mm	Lateral height mm	Load capacity kg *	Part. No.
50 S	36	33	60	10-33050
75 S	61	52	80	10-33075
75 T	54	52	200	10-33076
100 S	86	77	100	10-33100
100 T	79	77	200	10-33101
125 S	111	77	100	10-33125
125 T	104	77	200	10-33126
150 S	136	127	100	10-33150
150 T	129	127	200	10-33151
175 T	154	127	200	10-33176
200 S	186	177	100	10-33200
200 T	179	177	200	10-33201
250 T	229	177	200	10-33251
300 S	286	277	100	10-33300
300 T	279	277	200	10-33301
400 T	379	277	200	10-33401

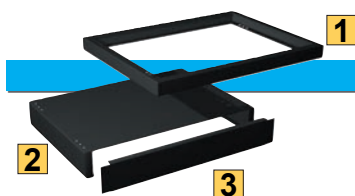
S = simple extension: 85 - 90% extension

T = total extension: 100% extension

* with load evenly distributed and at least one slotted divider in the middle

Colour: Light grey RAL 7035 internal,

for drawer front see colour chart at the bottom of the page



Cabinet bases

Made of high-quality steel

	Width mm	Depth mm	Height mm	Part. No.
1 Base plinth	717	693	50	05-43605
1 Base plinth	717	693	130	05-43613
2 Pallet base	717	659	100	05-13610
3 Cover plate	717	-	100	05-33610

Colour: Black



Card insert and cellophane (spare part)

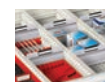
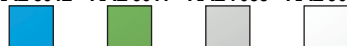
For drawers: 36 Eh

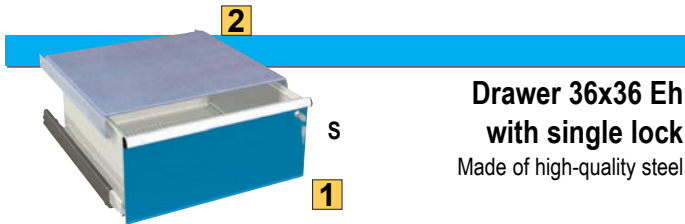
Part. No. **06-00365**

Kit: 30 pieces

Standard colours:

RAL 5012 RAL 6011 RAL 7035 RAL 9010





Drawer 36x36 Eh with single lock
Made of high-quality steel

1 Drawer with lock

Front height mm	Usable height mm	Lateral height mm	Load capacity kg *	Part. No.
300 S	286	277	100	13-33304

S = normal extension: 85 - 90% extension

* with load evenly distributed and at least one slotted divider in the middle

Colour: Light grey RAL 7035 internal,
for drawer front see colour chart at the bottom of the page

2 Cover shelf

Width mm	Depth mm	Part. No.
661	693	13-30002

Made of high-quality sheet steel

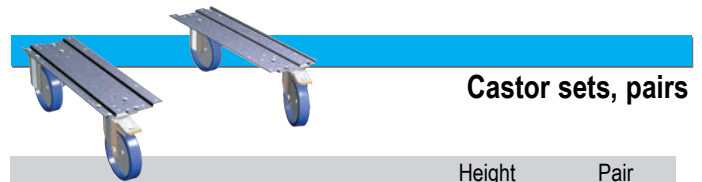
Lateral supports included



Work surfaces for cabinets

Width mm	Depth mm	Thickness mm	Multiplex Part. No.	Plastic laminated Part. No.
1500	750	40	13-30094	13-30084

Colour: Plastic laminated Light grey



Castor sets, pairs

	Height mm	Pair Part. No.
with nylon castors Ø 100 mm	137	06-37102
with polyurethane castors Ø 100 mm	137	06-37101
with polyurethane castors Ø 150 mm	194	06-37151

Load capacity: 400kg with load evenly distributed
Supports made of steel



Bases with castors
2 x 36x36 Eh

Size: 1434x725 mm

	Height mm	Part. No.
with nylon castors Ø 100 mm	137	06-39102
with polyurethane castors Ø 100 mm	137	06-39101
with polyurethane castors Ø 150 mm	194	06-39151

Load capacity: 400kg with load evenly distributed
Colours: see colour chart at the bottom of the page



nylon castors
(2 fixed and
2 swivel braked)



polyurethane castors
(2 fixed and
2 swivel braked)



Series 13

4



Size: 1500x750x840 mm h

Socket type	Plastic laminated Part. No.	Multiplex Part. No.
Schuko	13-20810-01	13-20810-11

Fittings:

- 1 Worktop 40 mm thick
- 1 Hardware cabinet with: electrical system, 1 retractable shelf and 1 fixed lower shelf
- 1 Closed leg 800mm h
- 1 Back panel



100 T
150 T
150 T
300 T

Size: 1500x750x840 mm h

Socket type	Plastic laminated Part. No.	Multiplex Part. No.
Schuko	13-20810-04	13-20810-14

Fittings:

- 1 Worktop 40 mm thick
- 1 Hardware cabinet with: electrical system, 1 retractable shelf and 1 fixed lower shelf
- 1 Cabinet 36x36 Eh with 4 drawers



Size: 1434x725x2000/840 mm h

Socket type	Plastic laminated Part. No.	Multiplex Part. No.
Schuko	13-90810-01	13-90810-11

Fittings:

- 1 Roller shutter cabinet with: 1 adjustable shelf and 1 worktop 40 mm thick
- 1 Hardware cabinet with: electrical system, 1 retractable shelf and 1 fixed lower shelf
- 1 Closed leg 800mm h
- 1 Back panel



100 T
150 T
150 T
300 T

Size: 1434x725x2000/840 mm h

Socket type	Plastic laminated Part. No.	Multiplex Part. No.
Schuko	13-90800-04	13-90800-14

Fittings:

- 1 Roller shutter cabinet with: 1 adjustable shelf and 1 worktop 40 mm thick
- 1 cabinet 36x36 Eh with 4 drawers
- 1 Closed leg 800mm h
- 1 Back panel

Standard colours:

RAL 5012 RAL 6011 RAL 7035 RAL 9010

136



Standard examples are supplied assembled

Standard examples:



Size: 1500x750x1040 mm h

Socket type	Plastic laminated Part. No.	Multiplex Part. No.
Schuko	13-21010-01	13-21010-11

Fittings:

- 1 Worktop 40 mm thick
- 1 Hardware cabinet with keyboard drawer: electrical system, 1 retractable shelf and 1 fixed lower shelf
- 1 Closed leg 1000mm h
- 1 Back panel



Size: 1500x750x1040 mm h

Socket type	Plastic laminated Part. No.	Multiplex Part. No.
Schuko	13-21010-04	13-21010-14

Fittings:

- 1 Worktop 40 mm thick
- 1 Hardware cabinet with keyboard drawer: electrical system, 1 retractable shelf and 1 fixed lower shelf
- 1 Cabinet 36x36 Eh with 7 drawers



Size: 1434x725x2200/1040 mm h

Socket type	Plastic laminated Part. No.	Multiplex Part. No.
Schuko	13-91010-01	13-91010-11

Fittings:

- 1 Roller shutter cabinet with: 1 adjustable shelf and 1 worktop 40 mm thick
- 1 Hardware cabinet with keyboard drawer: electrical system, 1 retractable shelf and 1 fixed lower shelf
- 1 Closed leg 1000mm h
- 1 Back panel



Size: 1434x725x2200/1040 mm h

Socket type	Plastic laminated Part. No.	Multiplex Part. No.
Schuko	13-91010-04	13-91010-14

Fittings:

- 1 Roller shutter cabinet with: 1 adjustable shelf and 1 worktop 40 mm thick
- 1 Hardware cabinet with: electrical system, 1 retractable shelf and 1 fixed lower shelf
- 1 Cabinet 36x36 Eh with 3 drawers with single lock



Electrical system is supplied with a fan and power trunking with 4 standard Schuko sockets (240V) and ON/OFF switch

Standard colours:

RAL 5012	RAL 6011	RAL 7035	RAL 9010
